



G
O
L
D
E
N
R
O
D

L-1011
TriStar
★ ★ ★

Issue: 523

Annual 2012

*Lockheed Martin Aeronautics Company
86 South Cobb Drive
Department 6A4M, Zone 0579
Marietta, GA 30063-0579*

*Hotline: 770 494 5444
Fax: 770 494 5445
Email: [S1011.support@lmco.com](mailto:$1011.support@lmco.com)*



Goldenrod Contents

Section I	Fleet Summary
Section II	Model Matrix
Section III	Aircraft Status
	a) Active/In-Active
	b) Attrited
Section IV	Fleet Status By Operator
Section V	Fleet Status By Serial Number
Section VI	Delivery Configuration

The Goldenrod is published annually. Some data is not shown at Operator request or non-availability. While every effort is made to ensure information accuracy, the data provided may not represent actual aircraft hours, cycles, configuration, or status. Please send updated information to the address below.

Non hour / cycle related changes are reflected by a vertical change bar

Address questions / corrections pertaining to the Goldenrod to:

L-1011 Technical Support
 86 South Cobb Drive
 Department 6A4M, Zone 0579
 Marietta, GA 30063-0579

or Fax 770 494 5445
 or email: L1011.Support@lmco.com

Section I - Fleet Hours / Cycles

	-1	-40	-50	-100	-150	-200	-250	-500	Total
AIRCRAFT HOURS									
Active									
Low	61,516			50,928		48,061	77,738	28,397	
High	61,516			65,320		48,061	78,177	78,001	
Total	61,516			116,248		48,061	155,915	488,968	870,708
Average	61,516			58,124		48,061	77,958	44,452	51,218
In-Active									
Low	37,779	60,106	22,729	42,226		36,411	75,749	4,060	
High	55,097	75,487	22,729	64,793		67,201	80,178	88,343	
Total	92,876	455,717	22,729	152,906		476,584	233,148	1,530,423	2,964,383
Average	46,438	65,102	22,729	50,969		47,658	77,716	61,217	58,125
Attrited									
Total	3,209,356	1,399,712	1,628,501	1,026,919	389,318	1,089,455	71,317	998,058	9,812,636
Average	47,901	60,857	60,315	57,051	64,886	41,902	71,317	71,290	53,916
Totals									
Total	3,363,748	1,855,429	1,651,230	1,296,073	389,318	1,614,100	460,380	3,017,449	13,647,727
Average	48,054	61,848	58,973	56,351	64,886	43,624	76,730	60,349	54,591

AIRCRAFT CYCLES

Active									
Low	27,116			14,318		15,407	19,362	8,354	
High	27,116			17,810		15,407	19,649	20,354	
Total	27,116			32,128		15,407	39,011	127,108	240,770
Average	27,116			16,064		15,407	19,506	11,555	14,163
In-Active									
Low	20,598	27,206	8,745	11,240		11,441	20,294	2,482	
High	24,161	37,709	8,745	29,626		29,880	22,083	20,694	
Total	44,759	212,729	8,745	63,615		235,798	63,531	348,240	977,417
Average	22,380	30,390	8,745	21,205		23,580	21,177	13,930	19,165
Attrited									
Total	1,556,911	673,904	652,850	354,599	150,774	539,615	21,669	231,519	4,181,841
Average	23,237	29,300	24,180	19,700	25,129	20,754	21,669	16,537	22,977
Totals									
Total	1,628,786	886,633	661,595	450,342	150,774	790,820	124,211	706,867	5,400,028
Average	23,268	29,554	23,628	19,580	25,129	21,374	20,702	14,137	21,600

AIRCRAFT AGE*

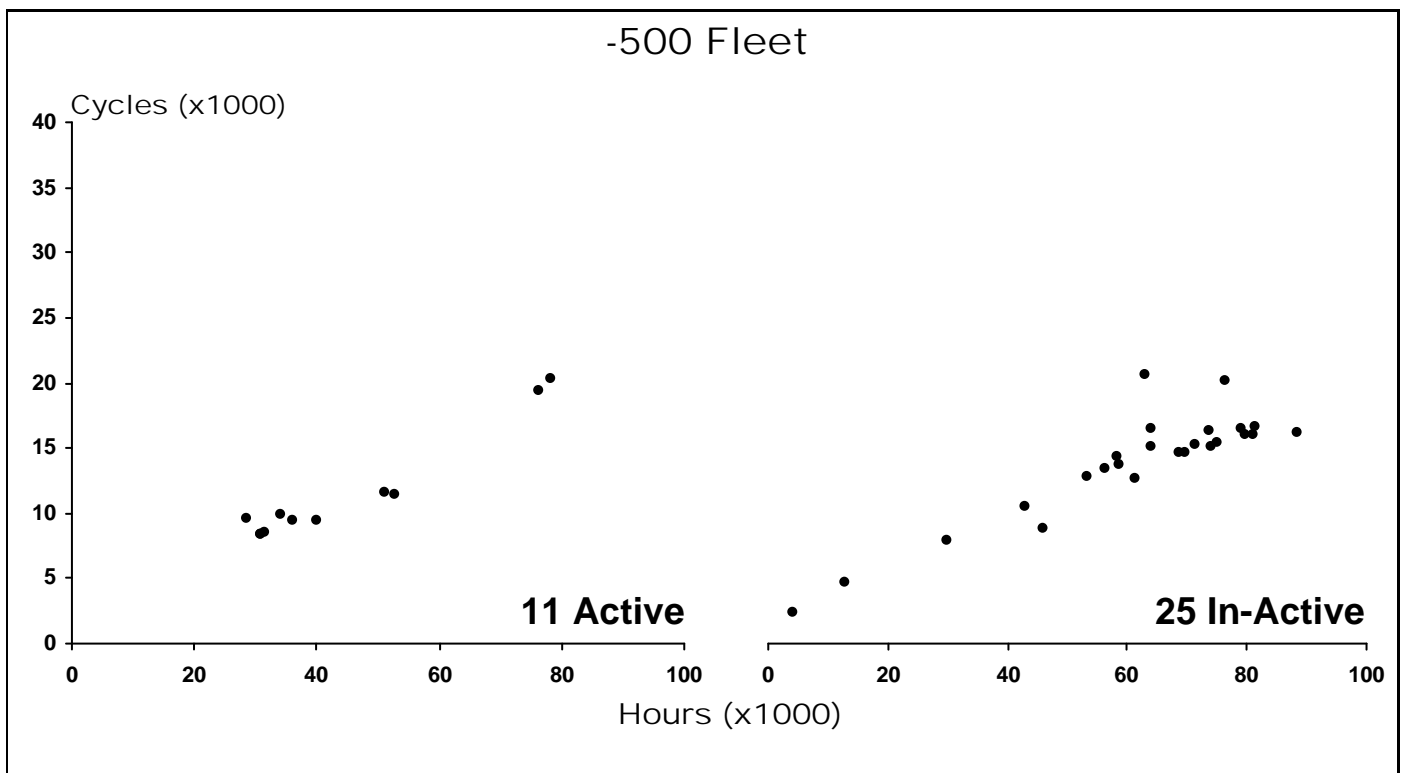
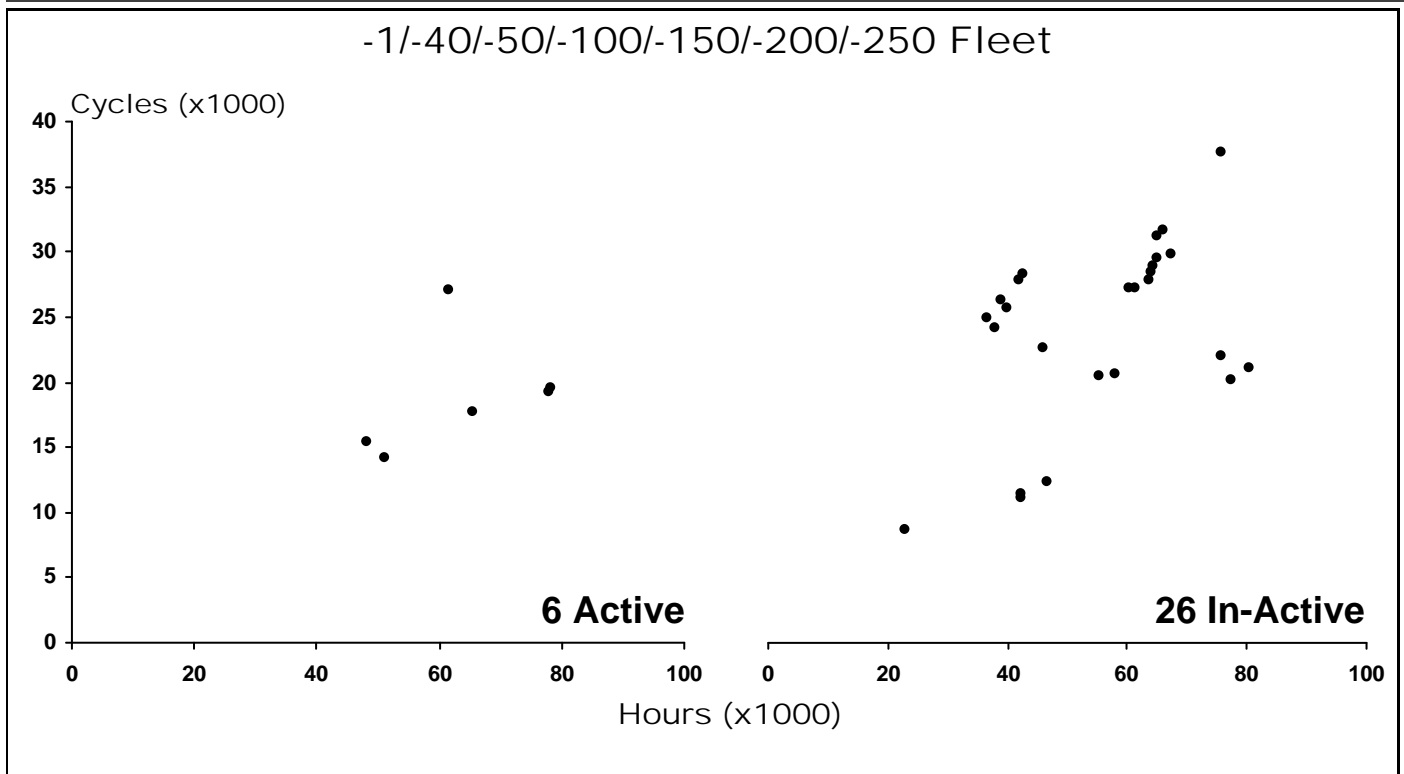
Active	40			31		38	30	32	32
In-Active	37	33	38	35		34	30	30	32
Total Avg	38	35	38	36	39	34	30	31	35

* Years since delivery - Active / In-Active aircraft only

AIRCRAFT TOTALS

Active	1			2		1	2	11	17
In-Active	2	7	1	3		10	3	25	51
Attrited	67	23	27	18	6	26	1	14	182
Total	70	30	28	23	6	37	6	50	250

Section I - Fleet Summary - Active / In-Active Profile



Section II - Model Matrix - Active Aircraft Only

Operator / Owner	-1	-40	-50	-100	-150	-200	-250	-500	Total
Barq Aviation				1				2	3
Las Vegas Sands Corporation								1	1
Orbital Science Corporation						1			1
Royal Air Force								8	8
Sky Capital	1								1
Sky Pearl Aviation				1			2		3
Total Aircraft	1			2		1	2	11	17

Section IIIa - Active/In-Active Aircraft Status

Type	SN	Regstr	Config*	Engine	GTOW	MLW	ZFW	FUEL	---- Period ----			---- Since New ----		
									Hrs	Cycles	Avg	Hrs	Cycles	Avg
<u>AeroStar Investments (3 Aircraft)</u>														
In-Active: (3 Aircraft)														
-200	1131	N307GB	F	524B	474K	380K	350K	178K				67,201	29,880	2.2
	1133	N308GB	F	524B	474K	380K	350K	178K				63,603	27,836	2.3
	1158	N260FA	F	524B	474K	380K	350K	160K				57,862	20,655	2.8
<u>Air Rum (2 Aircraft)</u>														
In-Active: (2 Aircraft)														
-1	1156		P	22B	430K	358K	325K	160K				37,779	24,161	1.6
-40	1200		P	22B	440K	358K	325K	160K				63,900	28,559	2.2
<u>Air Universal (1 Aircraft)</u>														
In-Active: (1 Aircraft)														
-250	1244	9L-LDE	P	524B4	510K	368K	338K	214K				77,221	20,294	3.8
<u>Al Anwa Trading (2 Aircraft)</u>														
In-Active: (2 Aircraft)														
-500	1195	VP-CGF	P	524B4	510K	368K	338K	214K				45,974	8,825	5.2
	1247	HZ-AB1	V	524B4	510K	368K	338K	214K						
<u>AMW (1 Aircraft)</u>														
In-Active: (1 Aircraft)														
-100	1101	TT-DAE	F	22B	474K	368K	338K	160K				45,887	22,749	2.0
<u>Barq Aviation (3 Aircraft)</u>														
Active: (3 Aircraft)														
-100	1230	N194AT	P	22B	474K	368K	338K	178K	71	23	3.1	65,320	17,810	3.7 I
-500	1220	N162AT	P	524B4	516K	368K	338K	214K	362	88	4.1	78,001	20,354	3.8 I
	1238	N164AT	P	524B4	516K	368K	338K	214K	-193	-974	0.2	76,303	19,477	3.9 I
<u>EuroAlantic Airways (1 Aircraft)</u>														
In-Active: (1 Aircraft)														
-500	1240	CS-TEB	P	524B4	510K	368K	338K	214K				64,007	15,175	4.2
<u>Flying Hospital (1 Aircraft)</u>														
In-Active: (1 Aircraft)														
-50	1064	P4-MED	M	22B	450K	358K	325K	160K				22,729	8,745	2.6
<u>Freedom Air (1 Aircraft)</u>														
In-Active: (1 Aircraft)														
-200	1198	SX-CVE	F	524B	474K	368K	350K	178K				46,462	12,440	3.7
<u>Hewa Bora Airways (1 Aircraft)</u>														
In-Active: (1 Aircraft)														

* Configuration: F=Freight; M=Missionized; P=Passenger; R=Tanker/Freight; T=Tanker; V=VIP

Type	SN	Regstr	Config*	Engine	GTOW	MLW	ZFW	FUEL	---- Period ----			---- Since New ----		
									Hrs	Cycles	Avg	Hrs	Cycles	Avg
-500	1209	9Q-CHC	P	524B4	516K	368K	338K	214K				78,822	16,535	4.8
<u>Jet Aircraft Leasing (2 Aircraft)</u>														
In-Active: (2 Aircraft)														
-1	1013		P	22B	430K	358K	325K	160K				55,097	20,598	2.7
-100	1215		P	22B	466K	368K	338K	178K				42,226	11,240	3.8
<u>Joasro Aviation (3 Aircraft)</u>														
In-Active: (3 Aircraft)														
-100	1103	OD-HEO	P	22B	466K	368K	338K	160K				64,793	29,626	2.2
-500	1236	SX-CVD	P	524B4	510K	368K	338K	214K				63,990	16,617	3.9
	1239	OD-ZEE	P	524B4	510K	368K	338K	214K				58,355	14,386	4.1
<u>Kallat Elsaker Air (2 Aircraft)</u>														
In-Active: (2 Aircraft)														
-500	1243	XT-BRK	P	524B4	510K	368K	338K	214K				56,271	13,472	4.2
	1246	XT-RAD	P	524B4	510K	368K	338K	214K				42,669	10,592	4.0
<u>Las Vegas Sands Corporation (2 Aircraft)</u>														
Active: (1 Aircraft)														
-500	1249	N388LS	P	524B4	510K	368K	338K	214K	95	33	2.9	28,397	9,648	2.9
In-Active: (1 Aircraft)														
-500	1250	N389LS	P	524B4	510K	368K	338K	214K				12,717	4,805	2.6
<u>Luzair (3 Aircraft)</u>														
In-Active: (3 Aircraft)														
-500	1189	CS-TFP	P	524B4	510K	368K	338K	214K				88,343	16,314	5.4
	1241	CS-TMR	P	524B4	510K	368K	338K	214K				61,132	12,661	4.8
	1248	CS-TMP	P	524B4	510K	368K	338K	214K				53,176	12,904	4.1
<u>Orbital Science Corporation (1 Aircraft)</u>														
Active: (1 Aircraft)														
-200	1067	N140SC	M	524B4	466K	368K	338K	178K	19	62	0.3	48,061	15,407	3.1
<u>Privilege Jet Airlines (1 Aircraft)</u>														
In-Active: (1 Aircraft)														
-500	1242	HR-AVN	P	524B4	510K	368K	338K	214K				58,506	13,862	4.2
<u>Regency Projects Ltd (5 Aircraft)</u>														
In-Active: (5 Aircraft)														
-200	1124	HZ-AHE	P	524B	466K	380K	338K	178K				41,861	27,939	1.5
	1130	HZ-AHF	P	524B	466K	380K	338K	178K				42,597	28,413	1.5
	1137	HZ-AHC	P	524B	466K	380K	338K	178K				39,838	25,787	1.5
	1160	HZ-AHI	P	524B	466K	380K	338K	178K				38,660	26,399	1.5
	1171	HZ-AHM	P	524B	466K	380K	338K	178K				36,411	25,008	1.5
<u>Royal Air (3 Aircraft)</u>														
In-Active: (3 Aircraft)														
-40	1199	TY-KEQ	P	22B	440K	358K	325K	160K				64,051	29,022	2.2

* Configuration: F=Freight; M=Missionized; P=Passenger; R=Tanker/Freight; T=Tanker; V=VIP

Type	SN	Regstr	Config*	Engine	GTOW	MLW	ZFW	FUEL	---- Period ----			---- Since New ----		
									Hrs	Cycles	Avg	Hrs	Cycles	Avg
	1225	TY-KEC	P	22B	440K	358K	325K	160K				61,174	27,206	2.2
	1226	TY-KEU	P	22B	440K	358K	325K	160K				60,106	27,231	2.2

Royal Air Force (9 Aircraft)

Active: (8 Aircraft)

-500	1157	ZD-948	R	524B4	540K	368K	346K	311K	1,105	490	2.3	33,965	9,924	3.4	I
	1164	ZD-950	R	524B4	540K	368K	346K	311K	690	255	2.7	31,332	8,598	3.6	I
	1165	ZD-951	T	524B4	540K	368K	346K	311K	892	336	2.7	30,578	8,354	3.7	I
	1168	ZD-952	R	524B4	540K	368K	346K	311K	528	215	2.5	35,881	9,577	3.7	I
	1174	ZD-953	R	524B4	540K	368K	346K	311K	1,066	390	2.7	30,799	8,426	3.7	I
	1177	ZE-706	P	524B4	540K	368K	338K	213K	1,531	485	3.2	39,950	9,544	4.2	I
	1186	ZE-704	P	524B4	540K	368K	338K	213K	1,255	512	2.5	51,070	11,724	4.4	I
	1188	ZE-705	P	524B4	540K	368K	338K	213K	1,800	554	3.2	52,692	11,482	4.6	I

In-Active: (1 Aircraft)

-500	1159	ZD-949	T	524B4	540K	368K	346K	311K	55	17	3.2	29,671	8,013	3.7	I
------	------	--------	---	-------	------	------	------	------	----	----	-----	--------	-------	-----	---

Sky Capital (1 Aircraft)

Active: (1 Aircraft)

-1	1012	S2-AET	F	22B	430K	358K	332K	160K				61,516	27,116	2.3	
----	------	--------	---	-----	------	------	------	------	--	--	--	--------	--------	-----	--

Sky Pearl Aviation (5 Aircraft)

Active: (3 Aircraft)

-100	1221	TZ-MHI	P	22B	466K	368K	338K	178K				50,928	14,318	3.6	
-250	1237	TZ-SGI	P	524B4	510K	368K	338K	214K				77,738	19,362	4.0	
	1245	TZ-SPA	P	524B4	510K	368K	338K	214K				78,177	19,649	4.0	

In-Active: (2 Aircraft)

-250	1228	EX-058	P	524B4	510K	368K	338K	214K				75,749	22,083	3.4	
	1234	JY-SGI	P	524B4	510K	368K	338K	214K				80,178	21,154	3.8	

Skyeyes Airways (1 Aircraft)

In-Active: (1 Aircraft)

-200	1212	HS-SEC	F	524B	474K	368K	350K	178K				42,089	11,441	3.7	I
------	------	--------	---	------	------	------	------	------	--	--	--	--------	--------	-----	---

StarJet (1 Aircraft)

In-Active: (1 Aircraft)

-500	1222	A6-BSM	P	524B4	504K	368K	338K	214K				62,758	20,694	3.0	
------	------	--------	---	-------	------	------	------	------	--	--	--	--------	--------	-----	--

Thai Sky Airlines (2 Aircraft)

In-Active: (2 Aircraft)

-40	1097	HS-AXE	P	22B	440K	358K	325K	160K				75,487	37,709	2.0	
	1147	HS-AXA	P	22B	440K	358K	325K	160K				65,001	31,267	2.1	

Trans Atlantic Airlines (1 Aircraft)

In-Active: (1 Aircraft)

-40	1150	N723DA	P	22B	440K	358K	325K	160K				65,998	31,735	2.1	
-----	------	--------	---	-----	------	------	------	------	--	--	--	--------	--------	-----	--

Wells Fargo Bank Northwest (10 Aircraft)

In-Active: (10 Aircraft)

-500	1176	N759DA	P	524B4	516K	368K	338K	214K				69,505	14,681	4.7	
------	------	--------	---	-------	------	------	------	------	--	--	--	--------	--------	-----	--

* Configuration: F=Freight; M=Missionized; P=Passenger; R=Tanker/Freight; T=Tanker; V=VIP

Type	SN	Regstr	Config*	Engine	GTOW	MLW	ZFW	FUEL	---- Period ----			---- Since New ----		
									Hrs	Cycles	Avg	Hrs	Cycles	Avg
	1181	N754DL	P	524B4	510K	368K	338K	214K				79,504	16,034	5.0
	1184	N755DL	P	524B4	516K	368K	338K	214K				80,983	16,084	5.0
	1185	N756DR	P	524B4	510K	368K	338K	214K				81,431	16,640	4.9
	1194	N760DH	P	524B4	516K	368K	338K	214K				71,236	15,354	4.6
	1207	N766DA	P	524B4	516K	368K	338K	214K				74,889	15,548	4.8
	1208	N761DA	P	524B4	516K	368K	338K	226K				68,715	14,742	4.7
	1216	N768DL	P	524B4	516K	368K	338K	214K				73,503	16,470	4.5
	1218	N769DL	P	524B4	516K	368K	338K	214K				73,948	15,144	4.9
	1229	N163AT	P	524B4	516K	368K	338K	214K				76,258	20,206	3.8

Aircraft Totals		-1	-40	-50	-100	-150	-200	-250	-500
Active:	17	1			2		1	2	11
In-Active:	51	2	7	1	3		10	3	25
Total:	68	3	7	1	5		11	5	36

* Configuration: F=Freight; M=Missionized; P=Passenger; R=Tanker/Freight; T=Tanker; V=VIP

Section IIIb - Attrited Aircraft

SN	Original Operator	Type	Config*	Engine	GTOW	Delivery	Attrited	Age	Hrs	Cycles	Avg
1001	Lockheed California Co	-1	M	22B	430K	11/16/70	08/86	15.7	3,842	1,841	2.1
1002	Eastern Air Lines	-1	P	22B	430K	03/24/73	02/94	20.9	42,374	21,192	2.0
1003	Eastern Air Lines	-1	P	22B	430K	05/22/73	10/00	27.4	53,220	27,831	1.9
1004	Eastern Air Lines	-1	P	22B	430K	12/15/72	12/99	27.0	50,491	23,365	2.2
1005	Eastern Air Lines	-1	P	22B	430K	07/11/72	12/07	35.5	41,768	18,903	2.2
1006	Eastern Air Lines	-1	P	22B	430K	11/23/72	08/02	29.8	52,533	25,782	2.0
1007	Eastern Air Lines	-1	P	22B	430K	04/05/72	06/96	24.2	29,487	15,514	1.9
1008	Eastern Air Lines	-1	P	22B	430K	05/26/72	12/01	29.5	43,396	21,136	2.1
1009	Eastern Air Lines	-1	P	22B	430K	07/11/72	04/04	31.8	58,841	28,822	2.0
1010	Eastern Air Lines	-150	P	22B	470K	07/25/72	04/01	28.7	63,618	26,256	2.4
1011	Eastern Air Lines	-1	P	22B	430K	08/18/72	12/72	0.4	987	505	2.0
1014	Trans World Airlines	-1	P	22B	430K	07/04/72	07/92	20.1	47,257	18,693	2.5
1015	Trans World Airlines	-1	P	22B	430K	08/11/72	02/00	27.5	66,472	24,823	2.7
1016	Trans World Airlines	-1	P	22B	430K	08/30/72	12/98	26.3	65,689	25,562	2.6
1017	Trans World Airlines	-1	P	22B	430K	09/27/72	09/97	24.9	66,521	25,135	2.6
1018	Trans World Airlines	-1	P	22B	430K	09/26/72	09/97	24.9	67,579	24,862	2.7
1019	Haas Turner	-150	P	22B	474K	12/13/72	12/04	32.1	66,222	24,979	2.7
1020	Eastern Air Lines	-1	P	22B	430K	12/15/72	04/98	25.3	46,384	22,027	2.1
1021	Air Canada	-1	P	22B	430K	01/14/73	11/00	27.9	58,718	24,736	2.4
1022	Eastern Air Lines	-1	P	22B	430K	01/02/73	06/06	33.5	57,676	28,780	2.0
1023	Haas Turner	-150	P	22B	474K	01/06/73	04/02	29.3	68,629	25,044	2.7
1024	Courtline	-1	P	22B	430K	02/28/73	11/06	33.8	50,304	25,644	2.0
1025	Air Canada	-1	P	22B	430K	03/09/73	11/99	26.7	48,376	21,616	2.2
1026	Trans World Airlines	-1	P	22B	430K	04/07/73	04/74	1.0	2,382	1,018	2.3
1027	Air Canada	-1	P	22B	430K	04/12/73	11/94	21.6	47,955	20,904	2.3
1028	Trans World Airlines	-1	P	22B	430K	04/21/73	10/01	28.5	62,506	23,982	2.6
1029	Trans World Airlines	-1	P	22B	430K	05/16/73	08/95	22.2	56,242	21,079	2.7
1030	Trans World Airlines	-1	P	22B	430K	05/29/73	03/98	24.8	57,375	20,921	2.7
1031	Trans World Airlines	-1	P	22B	430K	05/30/73	12/99	26.5	53,901	20,960	2.6
1032	Courtline	-1	P	22B	430K	04/30/73	07/99	26.3	43,563	22,301	2.0
1033	Luftransport Unternehmen	-1	P	22B	430K	05/29/73	11/99	26.4	54,942	23,978	2.3
1034	Trans World Airlines	-1	P	22B	430K	06/20/73	02/94	20.7	53,809	19,802	2.7
1035	Trans World Airlines	-1	P	22B	430K	07/04/73	09/99	26.2	63,569	23,178	2.7
1036	Trans World Airlines	-1	P	22B	430K	07/04/73	10/98	25.3	64,869	24,334	2.7
1037	Eastern Air Lines	-1	P	22B	430K	06/30/73	01/99	25.5	51,627	26,880	1.9
1038	Eastern Air Lines	-1	P	22B	430K	07/17/73	12/03	30.5	58,701	28,504	2.1
1039	Eastern Air Lines	-1	P	22B	430K	08/13/73	10/96	23.2	50,165	24,613	2.0
1040	Eastern Air Lines	-1	P	22B	430K	08/13/73	11/00	27.2	48,481	22,545	2.2
1041	Delta Air Lines	-150	P	22B	474K	10/03/73	04/06	32.6	74,656	33,236	2.2
1042	Eastern Air Lines	-1	P	22B	430K	09/01/73	12/95	22.3	47,667	24,124	2.0
1043	Eastern Air Lines	-1	P	22B	430K	09/20/73	04/01	27.6	55,388	27,850	2.0

* Configuration: F=Freight; M=Missionized; P=Passenger; R=Tanker/Freight; T=Tanker; V=VIP

SN	Original Operator	Type	Config*	Engine	GTOW	Delivery	Attrited	Age	Hrs	Cycles	Avg
1044	Eastern Air Lines	-1	P	22B	430K	10/12/73	02/97	23.3	49,432	24,307	2.0
1045	Eastern Air Lines	-1	P	22B	430K	10/16/73	06/96	22.6	49,121	24,079	2.0
1046	Delta Air Lines	-1	P	22B	430K	10/25/73	05/94	20.5	52,321	24,944	2.1
1047	Air Canada	-1	P	22B	430K	11/11/73	11/97	24.0	41,975	19,305	2.2
1048	Air Canada	-150	P	22B	474K	11/18/73	12/07	34.1	56,201	20,164	2.8
1049	Air Canada	-150	P	22B	474K	12/06/73	02/02	28.2	59,992	21,095	2.8
1050	Eastern Air Lines	-1	P	22B	430K	11/13/73	12/99	26.1	56,700	26,920	2.1
1051	Eastern Air Lines	-1	P	22B	430K	11/22/73	04/00	26.4	56,517	28,232	2.0
1052	Delta Air Lines	-50	P	22B	450K	12/07/73	10/01	27.9	68,213	29,827	2.3
1053	All Nippon Airways	-100	P	22B	466K	12/18/73	08/00	26.6	73,191	30,178	2.4
1054	Eastern Air Lines	-1	P	22B	430K	11/22/73	06/99	25.5	54,547	27,146	2.0
1055	Eastern Air Lines	-1	P	22B	430K	12/28/73			55,099	26,640	2.1
1056	Eastern Air Lines	-200	P	524B	466K	12/20/73	06/92	18.5	51,663	24,669	2.1
1057	Delta Air Lines	-50	P	22B	450K	12/22/73	01/03	29.0	67,089	29,529	2.3
1058	Air Canada	-100	P	22B	474K	01/22/74	07/00	26.5	58,744	18,414	3.2
1059	Trans World Airlines	-1	P	22B	430K	01/23/74	09/98	24.7	54,343	20,274	2.7
1060	Trans World Airlines	-1	P	22B	430K	02/01/74	04/03	29.3	61,210	22,907	2.7
1061	All Nippon Airways	-100	P	22B	466K	01/28/74	05/86	12.3	28,915	16,666	1.7
1062	All Nippon Airways	-50	P	22B	450K	02/18/74	08/00	26.5	70,744	32,333	2.2
1063	Trans World Airlines	-1	P	22B	430K	02/23/74	04/98	24.1	63,484	24,155	2.6
1065	Trans World Airlines	-50	P	22B	450K	03/23/74	05/96	22.1	60,285	19,533	3.1
1066	Trans World Airlines	-50	P	22B	450K	04/18/74	04/09	35.0	69,622	22,094	3.2
1068	All Nippon Airways	-1	P	22B	430K	03/11/74	06/95	21.2	40,746	28,354	1.4
1069	Air Canada	-100	P	22B	474K	03/23/74	05/00	26.1	55,955	17,759	3.2
1070	All Nippon Airways	-50	P	22B	450K	04/06/74	05/07	33.2	52,816	26,275	2.0
1071	Delta Air Lines	-50	P	22B	450K	04/11/74	11/02	28.6	62,224	28,143	2.2
1072	Trans World Airlines	-50	P	22B	450K	04/27/74	06/06	32.2	71,244	23,180	3.1
1073	Air Canada	-100	P	22B	474K	04/28/74	05/04	30.1	64,473	19,776	3.3
1074	Delta Air Lines	-50	P	22B	450K	05/02/74	04/06	32.0	71,181	31,494	2.3
1075	Trans World Airlines	-50	P	22B	450K	05/29/74	02/97	22.7	59,591	19,394	3.1
1076	Trans World Airlines	-50	P	22B	450K	06/03/74	12/03	29.5	73,822	23,572	3.1
1077	Delta Air Lines	-50	P	22B	450K	05/24/74	10/01	27.4	68,265	29,990	2.3
1078	Delta Air Lines	-50	P	22B	450K	06/10/74	04/06	31.9	75,323	32,084	2.3
1079	Pacific Southwest Airlines	-50	P	22B	450K	08/28/74	07/94	19.9	17,074	6,461	2.6
1080	Trans World Airlines	-50	P	22B	450K	06/20/74	11/08	34.5	71,299	21,963	3.2
1081	Delta Air Lines	-50	P	22B	450K	06/28/74	04/06	31.8	66,824	29,961	2.2
1082	All Nippon Airways	-50	P	22B	450K	06/25/74	04/06	31.9	62,453	29,797	2.1
1083	British Airways	-100	P	22B	474K	10/19/74	09/04	30.0	47,696	21,653	2.2
1084	Delta Air Lines	-50	P	22B	450K	07/19/74	04/06	31.8	72,665	30,891	2.4
1085	Eastern Air Lines	-40	P	22B	440K	10/17/74	05/97	22.6	40,032	19,565	2.0
1086	Delta Air Lines	-50	P	22B	450K	09/06/74	12/02	28.3	71,042	30,629	2.3
1087	Eastern Air Lines	-40	P	22B	440K	06/30/75	04/97	21.8	45,100	20,081	2.2
1088	Delta Air Lines	-40	P	22B	440K	09/18/74	08/02	28.0	71,878	36,793	2.0
1089	Delta Air Lines	-40	P	22B	440K	10/02/74	07/96	21.8	65,539	34,045	1.9
1090	Delta Air Lines	-40	P	22B	440K	10/09/74	09/04	29.9	72,299	36,711	2.0

* Configuration: F=Freight; M=Missionized; P=Passenger; R=Tanker/Freight; T=Tanker; V=VIP

SN	Original Operator	Type	Config*	Engine	GTOW	Delivery	Attrited	Age	Hrs	Cycles	Avg
1091	Trans World Airlines	-50	P	22B	450K	12/10/74	02/98	23.2	62,674	19,852	3.2
1092	Delta Air Lines	-40	P	22B	440K	11/15/74	09/97	22.8	69,910	35,469	2.0
1093	British Airways	-100	F	22B	474K	11/08/74	01/09	34.2	43,447	22,911	1.9
1094	British Airways	-1	P	22B	430K	11/22/74	09/02	27.8	43,834	23,798	1.8
1095	Delta Air Lines	-40	P	22B	440K	11/22/74	05/02	27.5	71,712	36,173	2.0
1096	Delta Air Lines	-40	P	22B	440K	12/13/74			68,353	34,989	2.0
1098	Trans World Airlines	-100	P	22B	466K	12/13/74	03/98	23.2	65,039	18,375	3.5
1099	All Nippon Airways	-1	P	22B	430K	12/16/74	10/96	21.8	42,343	33,123	1.3
1100	All Nippon Airways	-1	P	22B	430K	01/18/75			42,970	29,713	1.4
1102	British Airways	-1	P	22B	430K	02/04/75	11/99	24.8	42,618	21,313	2.0
1104	Trans World Airlines	-100	P	22B	466K	03/03/78	03/98	20.0	62,476	16,591	3.8
1105	All Nippon Airways	-50	P	22B	450K	02/27/75	03/04	29.0	50,803	24,596	2.1
1106	British Airways	-100	P	22B	474K	03/19/75	09/04	29.6	52,415	20,147	2.6
1107	Trans World Airlines	-50	P	22B	450K	05/30/75	12/97	22.5	59,119	20,157	2.9
1108	Trans World Airlines	-100	P	22B	466K	07/09/75	12/94	19.4	61,411	17,390	3.5
1109	Trans World Airlines	-100	P	22B	466K	08/09/75	01/03	27.5	68,605	19,605	3.5
1110	Trans World Airlines	-200	P	524B	466K	05/25/75	08/08	33.3	44,685	29,048	1.5
1111	Trans World Airlines	-100	P	22B	474K	08/27/75	04/06	30.7	72,031	18,905	3.8
1112	All Nippon Airways	-50	P	22B	450K	05/12/75			52,190	25,424	2.1
1113	All Nippon Airways	-50	P	22B	450K	05/19/75	05/04	29.0	50,476	25,234	2.0
1114	Pacific Southwest Airlines	-1	P	22B	430K	03/15/77	06/91	14.3	42,514	16,419	2.6
1115	Trans World Airlines	-100	P	22B	466K	08/29/75			68,968	18,510	3.7
1116	Saudi Arabian Airlines	-200	P	524B	466K	07/12/75	08/08	33.1	43,315	28,758	1.5
1117	All Nippon Airways	-1	P	22B	430K	06/30/75	03/93	17.8	37,636	31,070	1.2
1118	Cathay Pacific	-100	P	22B	450K	08/08/75	02/00	24.5	50,503	24,989	2.0
1119	All Nippon Airways	-1	P	22B	430K	07/07/75	03/93	17.7	38,030	31,361	1.2
1120	Pacific Southwest Airlines	-1	P	22B	430K	05/10/77	08/97	20.3	53,395	20,440	2.6
1121	Eastern Air Lines	-40	P	22B	440K	12/06/75	04/97	21.4	47,212	22,267	2.1
1122	Cathay Pacific	-100	P	22B	466K	09/30/75	02/02	26.4	55,735	26,165	2.1
1123	Eastern Air Lines	-40	P	22B	440K	11/21/75	05/07	31.5	57,395	26,710	2.1
1125	Pacific Southwest Airlines	-1	P	22B	466K	10/24/77	10/00	23.0	57,580	19,402	3.0
1126	Eastern Air Lines	-40	P	22B	440K	03/26/76	05/02	26.1	47,541	22,439	2.1
1127	All Nippon Airways	-1	P	22B	430K	12/05/75	11/03	28.0	39,532	32,212	1.2
1128	All Nippon Airways	-1	P	22B	430K	12/15/75	01/94	18.1	37,655	31,742	1.2
1129	All Nippon Airways	-1	P	22B	430K	04/19/76	12/07	31.7	39,789	31,350	1.3
1132	British Airways	-50	P	22B	450K	01/23/76	09/97	21.6	40,974	12,427	3.3
1134	All Nippon Airways	-1	P	22B	430K	04/20/76	12/07	31.7	39,742	32,167	1.2
1135	Delta Air Lines	-40	P	22B	440K	04/10/76	05/07	31.2	70,774	34,743	2.0
1136	Delta Air Lines	-40	P	22B	440K	05/07/76	05/07	31.1	73,066	35,915	2.0
1138	Gulf Air	-200	F	524B	474K	06/05/76	12/07	31.6	61,215	27,236	2.2
1139	Delta Air Lines	-40	P	22B	440K	06/26/76	05/07	30.9	70,472	34,441	2.0
1140	Gulf Air	-200	P	524B	466K	07/27/76	10/00	24.3	51,240	22,793	2.2
1141	Eastern Air Lines	-40	P	22B	440K	11/11/76	03/04	27.3	48,794	22,450	2.2
1142	Eastern Air Lines	-40	P	22B	440K	05/20/77	09/02	25.3	51,109	23,200	2.2
1143	Eastern Air Lines	-40	P	22B	440K	05/29/77	09/04	27.3	55,788	25,316	2.2

* Configuration: F=Freight; M=Missionized; P=Passenger; R=Tanker/Freight; T=Tanker; V=VIP

SN	Original Operator	Type	Config*	Engine	GTOW	Delivery	Attrited	Age	Hrs	Cycles	Avg
1144	Saudi Arabian Airlines	-200	P	524B	466K	05/28/77	08/08	31.3	40,898	26,931	1.5
1145	British Airways	-50	P	22B	450K	12/10/76	04/09	32.4	43,665	15,451	2.8
1146	British Airways	-50	P	22B	450K	02/12/77	01/98	20.9	36,824	12,559	2.9
1148	Saudi Arabian Airlines	-200	P	524B	466K	10/02/77	08/08	30.9	40,129	27,010	1.5
1149	Saudi Arabian Airlines	-200	P	524B	466K	12/18/77	08/08	30.7	40,109	26,954	1.5
1151	Delta Air Lines	-200	P	524B	474K	06/18/78	06/01	23.0	65,463	25,021	2.6
1152	Eastern Air Lines	-1	F	22B	430K	07/27/78	01/04	25.4	46,403	18,489	2.5
1153	Eastern Air Lines	-1	P	22B	430K	09/13/78	12/99	21.2	54,064	21,066	2.6
1154	All Nippon Airways	-1	P	22B	430K	06/15/78	01/94	15.6	32,084	27,770	1.2
1155	All Nippon Airways	-1	P	22B	430K	07/14/78	09/09	31.2	38,068	23,285	1.6
1161	Saudi Arabian Airlines	-200	P	524B	466K	03/25/79	08/08	29.4	39,373	26,622	1.5
1162	Delta Air Lines	-40	P	22B	440K	02/21/79	12/02	23.9	60,076	28,551	2.1
1163	Delta Air Lines	-1	P	22B	430K	02/28/79	08/85	6.4	20,547	11,186	1.8
1166	Delta Air Lines	-500	P	524B4	510K	05/31/79	10/99	20.4	83,791	13,329	6.3
1167	Delta Air Lines	-40	P	22B	440K	06/20/79			65,653	30,473	2.2
1169	Saudi Arabian Airlines	-200	P	524B	466K	08/22/79	08/80	1.0	2,948	1,718	1.7
1170	Saudi Arabian Airlines	-200	P	524B	466K	09/24/79	08/08	28.9	37,901	25,824	1.5
1172	Delta Air Lines	-500	P	524B4	510K	10/03/79			82,891	13,092	6.3
1173	Delta Air Lines	-40	P	22B	440K	11/09/79			66,337	30,774	2.2
1175	Saudi Arabian Airlines	-200	P	524B	466K	10/20/80	08/08	27.9	34,832	23,605	1.5
1178	British Airways	-200	F	524B	474K	03/09/80	11/07	27.7	55,733	14,356	3.9
1179	British West Indies	-500	P	524B4	504K	01/28/80	04/08	28.3	65,408	22,223	2.9
1180	Delta Air Lines	-40	P	22B	440K	03/25/80	11/06	26.6	62,741	29,080	2.2
1182	British Airways	-200	F	524B	474K	04/22/80	09/09	29.4	46,064	11,930	3.9
1183	Lufttransport Unternehmen	-500	P	524B4	510K	04/14/80	10/00	20.5	78,400	13,349	5.9
1187	Saudi Arabian Airlines	-200	P	524B	466K	09/05/80	08/08	28.0	35,319	23,922	1.5
1190	Saudi Arabian Airlines	-200	P	524B	466K	09/23/80	03/06	25.5	33,940	23,367	1.5
1191	British West Indies	-500	P	524B4	504K	08/14/80	04/04	23.7	60,969	20,639	3.0
1192	Saudi Arabian Airlines	-200	P	524B	466K	02/02/81	03/06	25.2	32,783	22,393	1.5
1193	British Airways	-200	F	524B	474K	09/29/80	09/09	28.9	44,036	11,552	3.8
1196	Lufttransport Unternehmen	-500	P	524B4	510K	10/27/80	05/01	20.5	76,830	12,981	5.9
1197	Pan American	-500	P	524B4	516K	11/30/81	09/04	22.8	63,451	13,499	4.7
1201	Gulf Air	-200	P	524B	466K	12/18/80	07/05	24.6	44,347	20,898	2.1
1202	Air Canada	-500	P	524B4	510K	02/26/81	10/03	22.7	74,174	16,490	4.5
1203	Gulf Air	-200	P	524B	466K	02/27/81	05/07	26.2	44,140	20,864	2.1
1204	British Airways	-200	P	524B	474K	04/01/81	01/01	19.8	37,746	9,589	3.9
1205	British Airways	-200	P	524B	474K	04/13/81	01/01	19.8	36,072	9,058	4.0
1206	Air Canada	-500	P	524B4	510K	09/21/81	04/08	26.6	84,876	17,627	4.8
1210	Pan American	-500	P	524B4	516K	11/30/81	09/04	22.8	66,351	13,600	4.9
1211	British Air Tours	-200	F	524B	474K	05/15/81	06/09	28.1	51,874	13,782	3.8
1213	Delta Air Lines	-40	P	22B	440K	06/26/81	04/08	26.8	58,679	26,899	2.2
1214	Saudi Arabian Airlines	-200	P	524B	466K	08/19/81	08/08	27.0	33,924	23,385	1.5
1217	Royal Jordanian	-500	P	524B4	516K	09/11/81	04/06	24.6	63,457	17,893	3.5
1219	Royal Jordanian	-500	P	524B4	516K	10/20/81	11/09	28.1	76,966	21,218	3.6
1223	Gulf Air	-200	P	524B	466K	12/02/81	04/01	19.4	39,706	18,330	2.2

* Configuration: F=Freight; M=Missionized; P=Passenger; R=Tanker/Freight; T=Tanker; V=VIP

SN	Original Operator	Type	Config*	Engine	GTOW	Delivery	Attrited	Age	Hrs	Cycles	Avg
1224	Delta Air Lines	-40	P	22B	440K	12/11/81	09/04	22.7	59,252	26,820	2.2
1227	Delta Air Lines	-250	P	524B4	510K	03/11/82	08/02	20.4	71,317	21,669	3.3
1231	Trans World Airlines	-100	P	22B	466K	03/08/82	04/09	27.2	46,784	13,104	3.6
1232	Trans World Airlines	-100	P	22B	466K	05/26/82	08/04	22.2	50,531	13,461	3.8
1233	British West Indies	-500	P	524B4	504K	07/22/82	11/08	26.4	56,596	19,102	3.0
1235	Air Lanka	-500	P	524B4	510K	08/24/82	05/04	21.7	63,898	16,477	3.9

Total Aircraft	-1	-40	-50	-100	-150	-200	-250	-500
182	67	23	27	18	6	26	1	14

Section IV - Fleet Status By Operator

Regstr	SN	Mdl	Status*	Engine	Regstr	SN	Mdl	Status*	Engine	Regstr	SN	Mdl	Status*	Engine
AeroStar Investments (3 Aircraft)					CS-TMR	1241	293B	S P	524B4	Wells Fargo Bank Northwest (10 Aircraft)				
N307GB	1131	193U	S F	524B	CS-TMP	1248	193H	S P	524B4	N759DA	1176	193Y	S P	524B4
N308GB	1133	193U	S F	524B	Orbital Science Corporation (1 Aircraft)					N754DL	1181	193Y	S P	524B4
N260FA	1158	193A	S F	524B	N140SC	1067	193E	O M	524B4 I	N755DL	1184	193Y	S P	524B4
Air Rum (2 Aircraft)					Privilege Jet Airlines (1 Aircraft)					N756DR	1185	193Y	S P	524B4
	1156	193P	S P	22B	HR-AVN	1242	293B	S P	524B4	N760DH	1194	193Y	S P	524B4
	1200	193C	S P	22B	Regency Projects Ltd (5 Aircraft)					N766DA	1207	193H	S P	524B4
Air Universal (1 Aircraft)					HZ-AHE	1124	193B	S P	524B	N761DA	1208	193Y	S P	524B4
9L-LDE	1244	193C	S P	524B4	HZ-AHF	1130	193B	S P	524B	N768DL	1216	193H	S P	524B4
Al Anwa Trading (2 Aircraft)					HZ-AHC	1137	193S	S P	524B	N769DL	1218	193H	S P	524B4
VP-CGF	1195	193Y	S P	524B4	HZ-AHI	1160	193S	S P	524B	N163AT	1229	293A	S P	524B4
HZ-AB1	1247	193H	S V	524B4	HZ-AHM	1171	193S	S P	524B					
AMW (1 Aircraft)					Royal Air (3 Aircraft)									
TT-DAE	1101	193N	S F	22B	TY-KEQ	1199	193C	S P	22B					
Barq Aviation (3 Aircraft)					TY-KEC	1225	193C	S P	22B					
N194AT	1230	193B	O P	22B I	TY-KEU	1226	193C	S P	22B					
N162AT	1220	293A	O P	524B4 I	Royal Air Force (9 Aircraft)									
N164AT	1238	293A	O P	524B4 I	ZD-948	1157	193V	O R	524B4 I					
EuroAtlantic Airways (1 Aircraft)					ZD-949	1159	193V	S T	524B4 I					
CS-TEB	1240	293B	S P	524B4	ZD-950	1164	193V	O R	524B4 I					
Flying Hospital (1 Aircraft)					ZD-951	1165	193V	O T	524B4 I					
P4-MED	1064	193L	S M	22B	ZD-952	1168	193V	O R	524B4 I					
Freedom Air (1 Aircraft)					ZD-953	1174	193V	O R	524B4 I					
SX-CVE	1198	193N	S F	524B	ZE-706	1177	193Y	O P	524B4 I					
Hewa Bora Airways (1 Aircraft)					ZE-704	1186	193Y	O P	524B4 I					
9Q-CHC	1209	193H	S P	524B4	ZE-705	1188	193Y	O P	524B4 I					
Jet Aircraft Leasing (2 Aircraft)					Sky Capital (1 Aircraft)									
	1013	193B	S P	22B	S2-AET	1012	193A	O F	22B					
	1215	193B	S P	22B	Sky Pearl Aviation (5 Aircraft)									
Joasro Aviation (3 Aircraft)					TZ-MHI	1221	193B	O P	22B					
OD-HEO	1103	193P	S P	22B	EX-058	1228	193C	S P	524B4					
SX-CVD	1236	293F	S P	524B4	JY-SGI	1234	193C	S P	524B4					
OD-ZEE	1239	293B	S P	524B4	TZ-SGI	1237	193C	O P	524B4					
Kallat Elsaker Air (2 Aircraft)					TZ-SPA	1245	193C	O P	524B4					
XT-BRK	1243	293B	S P	524B4	Skyeyes Airways (1 Aircraft)									
XT-RAD	1246	193H	S P	524B4	HS-SEC	1212	293C	S F	524B I					
Las Vegas Sands Corporation (2 Aircraft)					StarJet (1 Aircraft)									
N388LS	1249	293A	O P	524B4 I	A6-BSM	1222	193G	S P	524B4					
N389LS	1250	193G	S P	524B4	Thai Sky Airlines (2 Aircraft)									
Luzair (3 Aircraft)					HS-AXE	1097	193C	S P	22B					
CS-TFP	1189	193W	S P	524B4	HS-AXA	1147	193C	S P	22B					
					Trans Atlantic Airlines (1 Aircraft)									
					N723DA	1150	193C	S P	22B					

* Status: O=Operational; S=Stored; F=Freight; M=Missionized; P=Passenger; R=Tanker/Freight; T=Tanker; V=VIP



Section V - Fleet Status By Serial Number

SN	*	Mdl	Operator/Owner	Reg#	Hours	Cycles	SN	*	Mdl	Operator/Owner	Reg#	Hours	Cycles
1001	AM	193X	Attrited		3,842	1,841	1064	SM	193L	Flying Hospital	P4-MED	22,729	8,745
1002	AP	193A	Attrited		42,374	21,192	1065	AP	193B	Attrited		60,285	19,533
1003	AP	193A	Attrited		53,220	27,831	1066	AP	193B	Attrited		69,622	22,094
1004	AP	193A	Attrited		50,491	23,365	1067	OM	193E	Orbital Science Corporation	N140SC	48,061	15,407
1005	AP	193A	Attrited		41,768	18,903	1068	AP	193P	Attrited		40,746	28,354
1006	AP	193A	Attrited		52,533	25,782	1069	AP	193E	Attrited		55,955	17,759
1007	AP	193A	Attrited		29,487	15,514	1070	AP	193P	Attrited		52,816	26,275
1008	AP	193A	Attrited		43,396	21,136	1071	AP	193C	Attrited		62,224	28,143
1009	AP	193A	Attrited		58,841	28,822	1072	AP	193B	Attrited		71,244	23,180
1010	AP	193A	Attrited		63,618	26,256	1073	AP	193E	Attrited		64,473	19,776
1011	AP	193A	Attrited		987	505	1074	AP	193C	Attrited		71,181	31,494
1012	OF	193A	Sky Capital	S2-AET	61,516	27,116	1075	AP	193B	Attrited		59,591	19,394
1013	SP	193B	Jet Aircraft Leasing		55,097	20,598	1076	AP	193B	Attrited		73,822	23,572
1014	AP	193B	Attrited		47,257	18,693	1077	AP	193C	Attrited		68,265	29,990
1015	AP	193B	Attrited		66,472	24,823	1078	AP	193C	Attrited		75,323	32,084
1016	AP	193B	Attrited		65,689	25,562	1079	AP	193L	Attrited		17,074	6,461
1017	AP	193B	Attrited		66,521	25,135	1080	AP	193B	Attrited		71,299	21,963
1018	AP	193B	Attrited		67,579	24,862	1081	AP	193C	Attrited		66,824	29,961
1019	AP	193M	Attrited		66,222	24,979	1082	AP	193P	Attrited		62,453	29,797
1020	AP	193A	Attrited		46,384	22,027	1083	AP	193N	Attrited		47,696	21,653
1021	AP	193E	Attrited		58,718	24,736	1084	AP	193C	Attrited		72,665	30,891
1022	AP	193A	Attrited		57,676	28,780	1085	AP	193A	Attrited		40,032	19,565
1023	AP	193M	Attrited		68,629	25,044	1086	AP	193C	Attrited		71,042	30,629
1024	AP	193K	Attrited		50,304	25,644	1087	AP	193A	Attrited		45,100	20,081
1025	AP	193E	Attrited		48,376	21,616	1088	AP	193C	Attrited		71,878	36,793
1026	AP	193B	Attrited		2,382	1,018	1089	AP	193C	Attrited		65,539	34,045
1027	AP	193E	Attrited		47,955	20,904	1090	AP	193C	Attrited		72,299	36,711
1028	AP	193B	Attrited		62,506	23,982	1091	AP	193B	Attrited		62,674	19,852
1029	AP	193B	Attrited		56,242	21,079	1092	AP	193C	Attrited		69,910	35,469
1030	AP	193B	Attrited		57,375	20,921	1093	AF	193N	Attrited		43,447	22,911
1031	AP	193B	Attrited		53,901	20,960	1094	AP	193N	Attrited		43,834	23,798
1032	AP	193K	Attrited		43,563	22,301	1095	AP	193C	Attrited		71,712	36,173
1033	AP	193R	Attrited		54,942	23,978	1096	AP	193C	Attrited		68,353	34,989
1034	AP	193B	Attrited		53,809	19,802	1097	SP	193C	Thai Sky Airlines	HS-AXE	75,487	37,709
1035	AP	193B	Attrited		63,569	23,178	1098	AP	193B	Attrited		65,039	18,375
1036	AP	193B	Attrited		64,869	24,334	1099	AP	193P	Attrited		42,343	33,123
1037	AP	193A	Attrited		51,627	26,880	1100	AP	193P	Attrited		42,970	29,713
1038	AP	193A	Attrited		58,701	28,504	1101	SF	193N	AMW	TT-DAE	45,887	22,749
1039	AP	193A	Attrited		50,165	24,613	1102	AP	193N	Attrited		42,618	21,313
1040	AP	193A	Attrited		48,481	22,545	1103	SP	193P	Joasro Aviation	OD-HEO	64,793	29,626
1041	AP	193C	Attrited		74,656	33,236	1104	AP	193B	Attrited		62,476	16,591
1042	AP	193A	Attrited		47,667	24,124	1105	AP	193P	Attrited		50,803	24,596
1043	AP	193A	Attrited		55,388	27,850	1106	AP	193N	Attrited		52,415	20,147
1044	AP	193A	Attrited		49,432	24,307	1107	AP	193B	Attrited		59,119	20,157
1045	AP	193A	Attrited		49,121	24,079	1108	AP	193B	Attrited		61,411	17,390
1046	AP	193C	Attrited		52,321	24,944	1109	AP	193B	Attrited		68,605	19,605
1047	AP	193E	Attrited		41,975	19,305	1110	AP	193S	Attrited		44,685	29,048
1048	AP	193E	Attrited		56,201	20,164	1111	AP	193B	Attrited		72,031	18,905
1049	AP	193E	Attrited		59,992	21,095	1112	AP	193P	Attrited		52,190	25,424
1050	AP	193A	Attrited		56,700	26,920	1113	AP	193P	Attrited		50,476	25,234
1051	AP	193A	Attrited		56,517	28,232	1114	AP	193L	Attrited		42,514	16,419
1052	AP	193C	Attrited		68,213	29,827	1115	AP	193B	Attrited		68,968	18,510
1053	AP	193P	Attrited		73,191	30,178	1116	AP	193S	Attrited		43,315	28,758
1054	AP	193A	Attrited		54,547	27,146	1117	AP	193P	Attrited		37,636	31,070
1055	AP	193A	Attrited		55,099	26,640	1118	AP	193T	Attrited		50,503	24,989
1056	AP	193A	Attrited		51,663	24,669	1119	AP	193P	Attrited		38,030	31,361
1057	AP	193C	Attrited		67,089	29,529	1120	AP	193L	Attrited		53,395	20,440
1058	AP	193E	Attrited		58,744	18,414	1121	AP	193A	Attrited		47,212	22,267
1059	AP	193B	Attrited		54,343	20,274	1122	AP	193T	Attrited		55,735	26,165
1060	AP	193B	Attrited		61,210	22,907	1123	AP	193A	Attrited		57,395	26,710
1061	AP	193P	Attrited		28,915	16,666	1124	SP	193B	Regency Projects Ltd	HZ-AHE	41,861	27,939
1062	AP	193P	Attrited		70,744	32,333	1125	AP	193L	Attrited		57,580	19,402
1063	AP	193B	Attrited		63,484	24,155	1126	AP	193A	Attrited		47,541	22,439

193A Eastern Air Lines	193J Lufttransport Unternehmen 500	193R Lufttransport Unternehmen	193Y Pan American 500
193B Trans World Airlines	193K Courtline	193S Saudi Arabian Airlines	293A Royal Jordanian
193C Delta Air Lines	193L Pacific Southwest Airlines	193T Cathay Pacific	293B Transportes Aeos
193E Air Canada	193M Haas Turner	193U Gulf Air	Portugueses
193G British West Indies 500	193N British Airways	193V British Airways 500	293C British Air Tours
193H Air Canada 500	193P All Nippon Airways	193W Delta Air Lines 500	293F Air Lanka

* Configuration: O=Operational; S=Stored; A=Attrited; F=Freight; M=Missionized; P=Passenger; R=Tanker/Freight; T=Tanker; V=VIP

SN	*	Mdl	Operator/Owner	Reg#	Hours	Cycles	SN	*	Mdl	Operator/Owner	Reg#	Hours	Cycles
1127	AP	193P	Attrited		39,532	32,212	1195	SP	193Y	Al Anwa Trading	VP-CGF	45,974	8,825
1128	AP	193P	Attrited		37,655	31,742	1196	AP	193J	Attrited		76,830	12,981
1129	AP	193P	Attrited		39,789	31,350	1197	AP	193Y	Attrited		63,451	13,499
1130	SP	193B	Regency Projects Ltd	HZ-AHF	42,597	28,413	1198	SF	193N	Freedom Air	SX-CVE	46,462	12,440
1131	SF	193U	AeroStar Investments	N307GB	67,201	29,880	1199	SP	193C	Royal Air	TY-KEQ	64,051	29,022
1132	AP	193N	Attrited		40,974	12,427	1200	SP	193C	Air Rum		63,900	28,559
1133	SF	193U	AeroStar Investments	N308GB	63,603	27,836	1201	AP	193U	Attrited		44,347	20,898
1134	AP	193P	Attrited		39,742	32,167	1202	AP	193H	Attrited		74,174	16,490
1135	AP	193C	Attrited		70,774	34,743	1203	AP	193U	Attrited		44,140	20,864
1136	AP	193C	Attrited		73,066	35,915	1204	AP	193N	Attrited		37,746	9,589
1137	SP	193S	Regency Projects Ltd	HZ-AHC	39,838	25,787	1205	AP	193N	Attrited		36,072	9,058
1138	AF	193U	Attrited		61,215	27,236	1206	AP	193H	Attrited		84,876	17,627
1139	AP	193C	Attrited		70,472	34,441	1207	SP	193H	Wells Fargo Bank Northwe	N766DA	74,889	15,548
1140	AP	193U	Attrited		51,240	22,793	1208	SP	193Y	Wells Fargo Bank Northwe	N761DA	68,715	14,742
1141	AP	193A	Attrited		48,794	22,450	1209	SP	193H	Hewa Bora Airways	9Q-CHC	78,822	16,535
1142	AP	193A	Attrited		51,109	23,200	1210	AP	193Y	Attrited		66,351	13,600
1143	AP	193A	Attrited		55,788	25,316	1211	AF	293C	Attrited		51,874	13,782
1144	AP	193S	Attrited		40,898	26,931	1212	SF	293C	Skyeyes Airways	HS-SEC	42,089	11,441
1145	AP	193N	Attrited		43,665	15,451	1213	AP	193C	Attrited		58,679	26,899
1146	AP	193N	Attrited		36,824	12,559	1214	AP	193S	Attrited		33,924	23,385
1147	SP	193C	Thai Sky Airlines	HS-AXA	65,001	31,267	1215	SP	193B	Jet Aircraft Leasing		42,226	11,240
1148	AP	193S	Attrited		40,129	27,010	1216	SP	193H	Wells Fargo Bank Northwe	N768DL	73,503	16,470
1149	AP	193S	Attrited		40,109	26,954	1217	AP	293A	Attrited		63,457	17,893
1150	SP	193C	Trans Atlantic Airlines	N723DA	65,998	31,735	1218	SP	193H	Wells Fargo Bank Northwe	N769DL	73,948	15,144
1151	AP	193C	Attrited		65,463	25,021	1219	AP	293A	Attrited		76,966	21,218
1152	AF	193A	Attrited		46,403	18,489	1220	OP	293A	Barq Aviation	N162AT	78,001	20,354
1153	AP	193A	Attrited		54,064	21,066	1221	OP	193B	Sky Pearl Aviation	TZ-MHI	50,928	14,318
1154	AP	193P	Attrited		32,084	27,770	1222	SP	193G	StarJet	A6-BSM	62,758	20,694
1155	AP	193P	Attrited		38,068	23,285	1223	AP	193U	Attrited		39,706	18,330
1156	SP	193P	Air Rum		37,779	24,161	1224	AP	193C	Attrited		59,252	26,820
1157	OR	193V	Royal Air Force	ZD-948	33,965	9,924 I	1225	SP	193C	Royal Air	TY-KEC	61,174	27,206
1158	SF	193A	AeroStar Investments	N260FA	57,862	20,655	1226	SP	193C	Royal Air	TY-KEU	60,106	27,231
1159	ST	193V	Royal Air Force	ZD-949	29,671	8,013 I	1227	AP	193C	Attrited		71,317	21,669
1160	SP	193S	Regency Projects Ltd	HZ-AHI	38,660	26,399	1228	SP	193C	Sky Pearl Aviation	EX-058	75,749	22,083
1161	AP	193S	Attrited		39,373	26,622	1229	SP	293A	Wells Fargo Bank Northwe	N163AT	76,258	20,206
1162	AP	193C	Attrited		60,076	28,551	1230	OP	193B	Barq Aviation	N194AT	65,320	17,810
1163	AP	193C	Attrited		20,547	11,186	1231	AP	193B	Attrited		46,784	13,104
1164	OR	193V	Royal Air Force	ZD-950	31,332	8,598 I	1232	AP	193B	Attrited		50,531	13,461
1165	OT	193V	Royal Air Force	ZD-951	30,578	8,354 I	1233	AP	193G	Attrited		56,596	19,102
1166	AP	193W	Attrited		83,791	13,329	1234	SP	193C	Sky Pearl Aviation	JY-SGI	80,178	21,154
1167	AP	193C	Attrited		65,653	30,473	1235	AP	293F	Attrited		63,898	16,477
1168	OR	193V	Royal Air Force	ZD-952	35,881	9,577 I	1236	SP	293F	Joasro Aviation	SX-CVD	63,990	16,617
1169	AP	193S	Attrited		2,948	1,718	1237	OP	193C	Sky Pearl Aviation	TZ-SGI	77,738	19,362
1170	AP	193S	Attrited		37,901	25,824	1238	OP	293A	Barq Aviation	N164AT	76,303	19,477
1171	SP	193S	Regency Projects Ltd	HZ-AHM	36,411	25,008	1239	SP	293B	Joasro Aviation	OD-ZEE	58,355	14,386
1172	AP	193W	Attrited		82,891	13,092	1240	SP	293B	EuroAtlantic Airways	CS-TEB	64,007	15,175
1173	AP	193C	Attrited		66,337	30,774	1241	SP	293B	Luzair	CS-TMR	61,132	12,661
1174	OR	193V	Royal Air Force	ZD-953	30,799	8,426 I	1242	SP	293B	Privilege Jet Airlines	HR-AVN	58,506	13,862
1175	AP	193S	Attrited		34,832	23,605	1243	SP	293B	Kallat Elsaker Air	XT-BRK	56,271	13,472
1176	SP	193Y	Wells Fargo Bank Northwe	N759DA	69,505	14,681	1244	SP	193C	Air Universal	9L-LDE	77,221	20,294
1177	OP	193Y	Royal Air Force	ZE-706	39,950	9,544 I	1245	OP	193C	Sky Pearl Aviation	TZ-SPA	78,177	19,649
1178	AF	193N	Attrited		55,733	14,356	1246	SP	193H	Kallat Elsaker Air	XT-RAD	42,669	10,592
1179	AP	193G	Attrited		65,408	22,223	1247	SV	193H	Al Anwa Trading	HZ-AB1		
1180	AP	193C	Attrited		62,741	29,080	1248	SP	193H	Luzair	CS-TMP	53,176	12,904
1181	SP	193Y	Wells Fargo Bank Northwe	N754DL	79,504	16,034	1249	OP	293A	Las Vegas Sands Corporati	N388LS	28,397	9,648
1182	AF	193N	Attrited		46,064	11,930	1250	SP	193G	Las Vegas Sands Corporati	N389LS	12,717	4,805
1183	AP	193J	Attrited		78,400	13,349							
1184	SP	193Y	Wells Fargo Bank Northwe	N755DL	80,983	16,084							
1185	SP	193Y	Wells Fargo Bank Northwe	N756DR	81,431	16,640							
1186	OP	193Y	Royal Air Force	ZE-704	51,070	11,724 I							
1187	AP	193S	Attrited		35,319	23,922							
1188	OP	193Y	Royal Air Force	ZE-705	52,692	11,482 I							
1189	SP	193W	Luzair	CS-TFP	88,343	16,314							
1190	AP	193S	Attrited		33,940	23,367							
1191	AP	193G	Attrited		60,969	20,639							
1192	AP	193S	Attrited		32,783	22,393							
1193	AF	193N	Attrited		44,036	11,552							
1194	SP	193Y	Wells Fargo Bank Northwe	N760DH	71,236	15,354							

193A Eastern Air Lines	193J Lufttransport Unternehmen 500	193R Lufttransport Unternehmen	193Y Pan American 500
193B Trans World Airlines	193K Courtline	193S Saudi Arabian Airlines	293A Royal Jordanian
193C Delta Air Lines	193L Pacific Southwest Airlines	193T Cathay Pacific	293B Transportes Aeros
193E Air Canada	193M Haas Turner	193U Gulf Air	Portugueses
193G British West Indies 500	193N British Airways	193V British Airways 500	293C British Air Tours
193H Air Canada 500	193P All Nippon Airways	193W Delta Air Lines 500	293F Air Lanka

* Configuration: O=Operational; S=Stored; A=Attrited; F=Freight; M=Missionized; P=Passenger; R=Tanker/Freight; T=Tanker; V=VIP

Section VI - Delivery Configuration

SN	Type	Operator / Owner	Regstr	Status*	SN	Type	Operator / Owner	Regstr	Status*
193A - Eastern Air Lines (37 Aircraft)					1014	-1	Attrited		AP
1002	-1	Attrited		AP	1015	-1	Attrited		AP
1003	-1	Attrited		AP	1016	-1	Attrited		AP
1004	-1	Attrited		AP	1017	-1	Attrited		AP
1005	-1	Attrited		AP	1018	-1	Attrited		AP
1006	-1	Attrited		AP	1026	-1	Attrited		AP
1007	-1	Attrited		AP	1028	-1	Attrited		AP
1008	-1	Attrited		AP	1029	-1	Attrited		AP
1009	-1	Attrited		AP	1030	-1	Attrited		AP
1010	-150	Attrited		AP	1031	-1	Attrited		AP
1011	-1	Attrited		AP	1034	-1	Attrited		AP
1012	-1	Sky Capital	S2-AET	OF	1035	-1	Attrited		AP
1020	-1	Attrited		AP	1036	-1	Attrited		AP
1022	-1	Attrited		AP	1059	-1	Attrited		AP
1037	-1	Attrited		AP	1060	-1	Attrited		AP
1038	-1	Attrited		AP	1063	-1	Attrited		AP
1039	-1	Attrited		AP	1065	-50	Attrited		AP
1040	-1	Attrited		AP	1066	-50	Attrited		AP
1042	-1	Attrited		AP	1072	-50	Attrited		AP
1043	-1	Attrited		AP	1075	-50	Attrited		AP
1044	-1	Attrited		AP	1076	-50	Attrited		AP
1045	-1	Attrited		AP	1080	-50	Attrited		AP
1050	-1	Attrited		AP	1091	-50	Attrited		AP
1051	-1	Attrited		AP	1098	-100	Attrited		AP
1054	-1	Attrited		AP	1104	-100	Attrited		AP
1055	-1	Attrited		AP	1107	-50	Attrited		AP
1056	-200	Attrited		AP	1108	-100	Attrited		AP
1085	-40	Attrited		AP	1109	-100	Attrited		AP
1087	-40	Attrited		AP	1111	-100	Attrited		AP
1121	-40	Attrited		AP	1115	-100	Attrited		AP
1123	-40	Attrited		AP	1124	-200	Regency Projects Ltd	HZ-AHE	SP
1126	-40	Attrited		AP	1130	-200	Regency Projects Ltd	HZ-AHF	SP
1141	-40	Attrited		AP	1215	-100	Jet Aircraft Leasing		SP
1142	-40	Attrited		AP	1221	-100	Sky Pearl Aviation	TZ-MHI	OP
1143	-40	Attrited		AP	1230	-100	Barq Aviation	N194AT	OP I
1152	-1	Attrited		AF	1231	-100	Attrited		AP
1153	-1	Attrited		AP	1232	-100	Attrited		AP
1158	-200	AeroStar Investments	N260FA	SF	193C - Delta Air Lines (41 Aircraft)				
193B - Trans World Airlines (38 Aircraft)					1041	-150	Attrited		AP
1013	-1	Jet Aircraft Leasing		SP	1046	-1	Attrited		AP

* Status: A=Attrited; O=Operational; S=Stored;; F=Freighter; M=Missionized; P=Passenger; R=Tanker/Freighter; T=Tanker; V=VIP

SN	Type	Operator / Owner	Regstr	Status*	SN	Type	Operator / Owner	Regstr	Status*
1052	-50	Attrited		AP	1049	-150	Attrited		AP
1057	-50	Attrited		AP	1058	-100	Attrited		AP
1071	-50	Attrited		AP	1067	-200	Orbital Science Corporatio	N140SC	OM I
1074	-50	Attrited		AP	1069	-100	Attrited		AP
1077	-50	Attrited		AP	1073	-100	Attrited		AP
1078	-50	Attrited		AP					
1081	-50	Attrited		AP	193G - British West Indies -500 (5 Aircraft)				
1084	-50	Attrited		AP	1179	-500	Attrited		AP
1086	-50	Attrited		AP	1191	-500	Attrited		AP
1088	-40	Attrited		AP	1222	-500	StarJet	A6-BSM	SP
1089	-40	Attrited		AP	1233	-500	Attrited		AP
1090	-40	Attrited		AP	1250	-500	Las Vegas Sands Corporat	N389LS	SP
1092	-40	Attrited		AP	193H - Air Canada - 500 (9 Aircraft)				
1095	-40	Attrited		AP	1202	-500	Attrited		AP
1096	-40	Attrited		AP	1206	-500	Attrited		AP
1097	-40	Thai Sky Airlines	HS-AXE	SP	1207	-500	Wells Fargo Bank Northwe	N766DA	SP
1135	-40	Attrited		AP	1209	-500	Hewa Bora Airways	9Q-CHC	SP
1136	-40	Attrited		AP	1216	-500	Wells Fargo Bank Northwe	N768DL	SP
1139	-40	Attrited		AP	1218	-500	Wells Fargo Bank Northwe	N769DL	SP
1147	-40	Thai Sky Airlines	HS-AXA	SP	1246	-500	Kallat Elsaker Air	XT-RAD	SP
1150	-40	Trans Atlantic Airlines	N723DA	SP	1247	-500	Al Anwa Trading	HZ-AB1	SV
1151	-200	Attrited		AP	1248	-500	Luzair	CS-TMP	SP
1162	-40	Attrited		AP	193J - Lufttransport Unternehmen -500 (2 Aircraft)				
1163	-1	Attrited		AP	1183	-500	Attrited		AP
1167	-40	Attrited		AP	1196	-500	Attrited		AP
1173	-40	Attrited		AP	193K - Courtline (2 Aircraft)				
1180	-40	Attrited		AP	1024	-1	Attrited		AP
1199	-40	Royal Air	TY-KEQ	SP	1032	-1	Attrited		AP
1200	-40	Air Rum		SP	193L - Pacific Southwest Airlines (5 Aircraft)				
1213	-40	Attrited		AP	1064	-50	Flying Hospital	P4-MED	SM
1224	-40	Attrited		AP	1079	-50	Attrited		AP
1225	-40	Royal Air	TY-KEC	SP	1114	-1	Attrited		AP
1226	-40	Royal Air	TY-KEU	SP	1120	-1	Attrited		AP
1227	-250	Attrited		AP	1125	-1	Attrited		AP
1228	-250	Sky Pearl Aviation	EX-058	SP	193M - Haas Turner (2 Aircraft)				
1234	-250	Sky Pearl Aviation	JY-SGI	SP	1019	-150	Attrited		AP
1237	-250	Sky Pearl Aviation	TZ-SGI	OP	1023	-150	Attrited		AP
1244	-250	Air Universal	9L-LDE	SP	193N - British Airways (15 Aircraft)				
1245	-250	Sky Pearl Aviation	TZ-SPA	OP	1083	-100	Attrited		AP
193E - Air Canada (10 Aircraft)					1093	-100	Attrited		AF
1021	-1	Attrited		AP	1094	-1	Attrited		AP
1025	-1	Attrited		AP	1101	-100	AMW	TT-DAE	SF
1027	-1	Attrited		AP	1102	-1	Attrited		AP
1047	-1	Attrited		AP					
1048	-150	Attrited		AP					

* Status: A=Attrited; O=Operational; S=Stored;; F=Freighter; M=Missionized; P=Passenger; R=Tanker/Freighter; T=Tanker; V=VIP

SN	Type	Operator / Owner	Regstr	Status*	SN	Type	Operator / Owner	Regstr	Status*
1106	-100	Attrited		AP	1170	-200	Attrited		AP
1132	-50	Attrited		AP	1171	-200	Regency Projects Ltd	HZ-AHM	SP
1145	-50	Attrited		AP	1175	-200	Attrited		AP
1146	-50	Attrited		AP	1187	-200	Attrited		AP
1178	-200	Attrited		AF	1190	-200	Attrited		AP
1182	-200	Attrited		AF	1192	-200	Attrited		AP
1193	-200	Attrited		AF	1214	-200	Attrited		AP
1198	-200	Freedom Air	SX-CVE	SF	193T - Cathay Pacific (2 Aircraft)				
1204	-200	Attrited		AP	1118	-100	Attrited		AP
1205	-200	Attrited		AP	1122	-100	Attrited		AP
193P - All Nippon Airways (21 Aircraft)					193U - Gulf Air (7 Aircraft)				
1053	-100	Attrited		AP	1131	-200	AeroStar Investments	N307GB	SF
1061	-100	Attrited		AP	1133	-200	AeroStar Investments	N308GB	SF
1062	-50	Attrited		AP	1138	-200	Attrited		AF
1068	-1	Attrited		AP	1140	-200	Attrited		AP
1070	-50	Attrited		AP	1201	-200	Attrited		AP
1082	-50	Attrited		AP	1203	-200	Attrited		AP
1099	-1	Attrited		AP	1223	-200	Attrited		AP
1100	-1	Attrited		AP	193V - British Airways -500 (6 Aircraft)				
1103	-100	Joasro Aviation	OD-HEO	SP	1157	-500	Royal Air Force	ZD-948	OR I
1105	-50	Attrited		AP	1159	-500	Royal Air Force	ZD-949	ST I
1112	-50	Attrited		AP	1164	-500	Royal Air Force	ZD-950	OR I
1113	-50	Attrited		AP	1165	-500	Royal Air Force	ZD-951	OT I
1117	-1	Attrited		AP	1168	-500	Royal Air Force	ZD-952	OR I
1119	-1	Attrited		AP	1174	-500	Royal Air Force	ZD-953	OR I
1127	-1	Attrited		AP	193W - Delta Air Lines -500 (3 Aircraft)				
1128	-1	Attrited		AP	1166	-500	Attrited		AP
1129	-1	Attrited		AP	1172	-500	Attrited		AP
1134	-1	Attrited		AP	1189	-500	Luzair	CS-TFP	SP
1154	-1	Attrited		AP	193X - Lockheed California Company (1 Aircraft)				
1155	-1	Attrited		AP	1001	-1	Attrited		AM
1156	-1	Air Rum		SP	193Y - Pan American -500 (12 Aircraft)				
193R - Lufttransport Unternehmen (1 Aircraft)					1176	-500	Wells Fargo Bank Northwe	N759DA	SP
1033	-1	Attrited		AP	1177	-500	Royal Air Force	ZE-706	OP I
193S - Saudi Arabian Airlines (16 Aircraft)					1181	-500	Wells Fargo Bank Northwe	N754DL	SP
1110	-200	Attrited		AP	1184	-500	Wells Fargo Bank Northwe	N755DL	SP
1116	-200	Attrited		AP	1185	-500	Wells Fargo Bank Northwe	N756DR	SP
1137	-200	Regency Projects Ltd	HZ-AHC	SP	1186	-500	Royal Air Force	ZE-704	OP I
1144	-200	Attrited		AP	1188	-500	Royal Air Force	ZE-705	OP I
1148	-200	Attrited		AP	1194	-500	Wells Fargo Bank Northwe	N760DH	SP
1149	-200	Attrited		AP	1195	-500	Al Anwa Trading	VP-CGF	SP
1160	-200	Regency Projects Ltd	HZ-AHI	SP	1197	-500	Attrited		AP
1161	-200	Attrited		AP					
1169	-200	Attrited		AP					

* Status: A=Attrited; O=Operational; S=Stored;; F=Freighter; M=Missionized; P=Passenger; R=Tanker/Freighter; T=Tanker; V=VIP

SN	Type	Operator / Owner	Regstr	Status*	SN	Type	Operator / Owner	Regstr	Status*
1208	-500	Wells Fargo Bank Northwe	N761DA	SP					
1210	-500	Attrited		AP					
293A - Royal Jordanian (6 Aircraft)									
1217	-500	Attrited		AP					
1219	-500	Attrited		AP					
1220	-500	Barq Aviation	N162AT	OP I					
1229	-500	Wells Fargo Bank Northwe	N163AT	SP					
1238	-500	Barq Aviation	N164AT	OP I					
1249	-500	Las Vegas Sands Corporat	N388LS	OP I					
293B - Transportes Aeros Portugueses (5 Aircraft)									
1239	-500	Joasro Aviation	OD-ZEE	SP					
1240	-500	EuroAtlantic Airways	CS-TEB	SP					
1241	-500	Luzair	CS-TMR	SP					
1242	-500	Privilege Jet Airlines	HR-AVN	SP					
1243	-500	Kallat Elsaker Air	XT-BRK	SP					
293C - British Air Tours (2 Aircraft)									
1211	-200	Attrited		AF					
1212	-200	Skyeyes Airways	HS-SEC	SF I					
293F - Air Lanka (2 Aircraft)									
1235	-500	Attrited		AP					
1236	-500	Joasro Aviation	SX-CVD	SP					

193A Eastern Air Lines	193R Lufttransport Unternehmen
193B Trans World Airlines	193S Saudi Arabian Airlines
193C Delta Air Lines	193T Cathay Pacific
193E Air Canada	193U Gulf Air
193G British West Indies 500	193V British Airways 500
193H Air Canada 500	193W Delta Air Lines 500
193J Lufttransport Unternehmen 500	193Y Pan American 500
193K Courtline	293A Royal Jordanian
193L Pacific Southwest Airlines	293B Transportes Aeros Portugueses
193M Haas Turner	293C British Air Tours
193N British Airways	293F Air Lanka 500
193P All Nippon Airways	

* Status: A=Attrited; O=Operational; S=Stored;; F=Freighter; M=Missionized; P=Passenger; R=Tanker/Freighter; T=Tanker; V=VIP